

# SILICA RESTRUCTURING AMPOLUE

Silica restructuring nanoampoule is specially formulated for the improvement of wrinkles and sagging skin. It is also helpful in treating patients with hair loss.

## What are ampoules used for?

An ampoule (also ampul and ampule) is a small sealed ampoule which is used to contain and preserve a sample, usually a solid or liquid. Ampoules are made of glass. Modern ampoules are most commonly used to contain pharmaceuticals and chemicals that must be protected from air and contaminants.

The Silicon ampoules contain ingredients that have a smoothing and toning effect, retarding the skin aging process. This solution restores strength, flexibility and elasticity to the collagen and elastin of the connective tissues. It moisturizes and renews the cells providing firmness and tonicity .

## What does silica do to your skin?

After the women took 10 mg of silica on a daily basis, their skin's rough texture was improved. Collagen is responsible for helping your skin maintain its youthfulness by keeping it firm and elastic. It also reduces the appearance of fine lines and wrinkles.

## Is silica safe for human consumption?

The fact that silicon dioxide is found in plants and drinking water suggests it's safe. Research has shown that the silica we consume through our diets doesn't accumulate in our bodies.



## silica restructuring Ampoule

Methylsilanol Mannuronate

5 x 0.34 Fl. oz 5 x 2 ml

pH 5.5

Phototypes I-VI

## Indication

Re-Structuring Effect Treatment

## Ingredients

Aqua (Water), Lecithin, Alcohol Denat, Methylsilanol Mannuronate, Sodium Cholate, Tocopherol, sodium Hydroxide, Sodium Chloride, Phenoxyethanol.

## Related Products:

[\\*Skin DNA serum](#)

[\\*Azelaic depigmenting serum](#)

[\\*Hair regrowth meso cocktail](#)

[\\*Pyruvic green cocktail peel](#)

## STEP 1 : CLEANSING

### activator Pre-treatment Gel

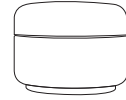
Rinse the face with water. Apply the product gently and massage for 1-2 minutes. Remove with a soft damp cloth or rinse gently with water. Your skin is ready for the treatment. Non greasy. Alcohol-free. Avoid in sensitive, reactive skin and eye contour.



## STEP 2 : PROTECTION

### protective petroleum jelly

Apply protective petroleum jelly around sensitive areas - periocular area, lips, nasal mucosa.



## STEP 3 : NANOROLLER

### nanoroller

Gently apply the nanoroller all over the treatment area with multiple passes, until the treatment area becomes pinkish / reddish. Use pressure if necessary. If irritation occurs, stop the procedure immediately and apply **aloe gel**.



## STEP 4 : NANOAMPOULE

### nanoampoule

Apply the nanoampoule & leave it for 2 - 3 minutes. Apply a second coat on the focused area if needed.

If irritation occurs, rinse off immediately with plenty of cold water.

**Note:** Physicians using their knowledge may select **nanoampoule** depending on skin condition.



## STEP 5 : NANOMESO

### nanomeso

Apply the single dose of **nanomeso** solution and gently massage till penetration. Gently massage till total absorption. Do not neutralize.

If irritation occurs, rinse off immediately with plenty of cold water.

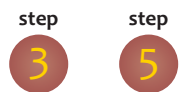


## STEP 6 : REPEAT STEPS 3 & 5

### repeat

Repeat step 3 & 5, 2 to 3 times

**Note:** Do not neutralize.



## STEP 7 : NANOSERUM (post-treatment Care)

### nanoserum

Apply gently a thick layer of **nanoserum** on the treatment area.



**Personal Care (prescription)** : Physician may prescribe **Leaderma** personal care products for continuing the treatments at home.

**Disclaimer:** All professional treatments are strictly recommended to be performed by certified physicians. Leaderma Inc. or any of its subsidiaries, distributors, associates, etc. do not guarantee treatment results and are not responsible for any adverse effects on clients. Some products may not be available in your country.